

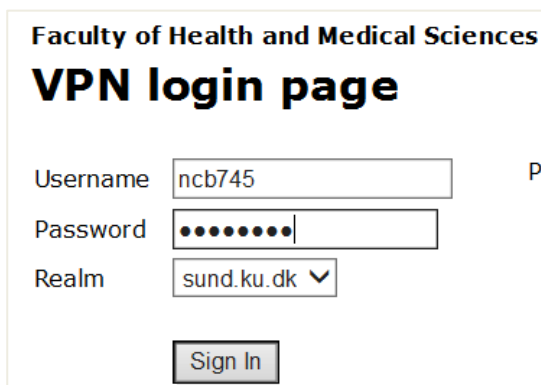
Installation of OpenLynx Browser

The OpenLynx browser program is used to look at the MS-data in RPT-files. These files contain processed MS-data from all samples in a batch. The program (only for Windows) can be installed from the O-drive.

Connect to O-drive

You are probably already connected to the O-drive if you are using a SUND-computer and it is connected to the network via a cable at the department. Otherwise you might try the the vpn-solution provided by SUND-IT.

Start internet Explorer (other browsers might work, but there is no guarantee) and go to the address <http://vpn.sund.ku.dk> and log in using your KU-identity and password. Wait until the vpn-application “Pulse” starts (small icon on the Windows task-bar, usually lower right on the screen).



Faculty of Health and Medical Sciences

VPN login page

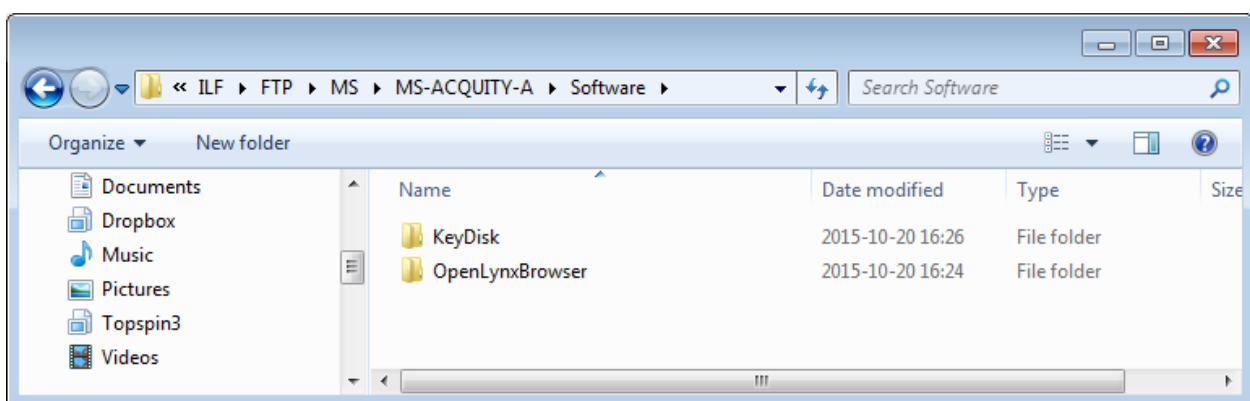
Username P

Password

Realm ▼

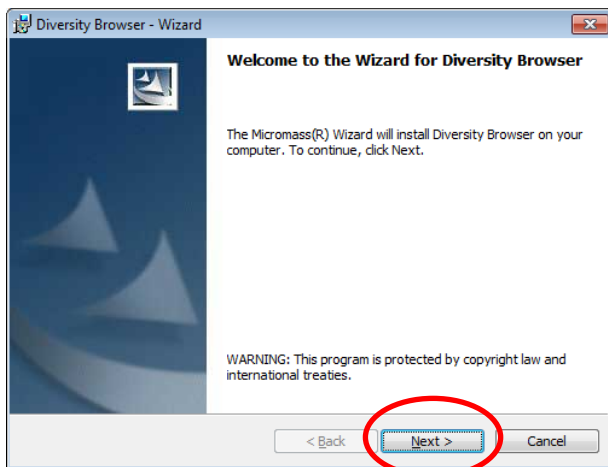
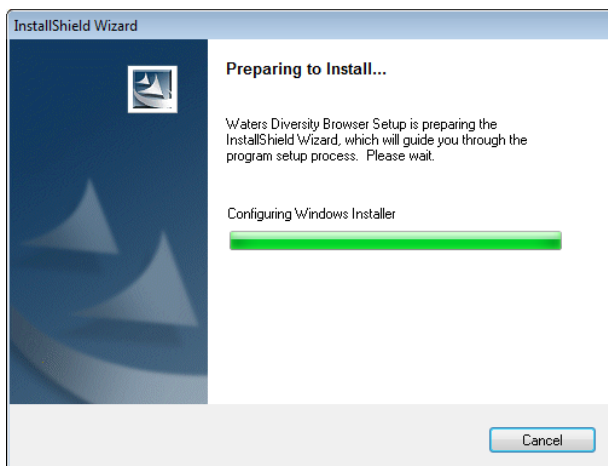
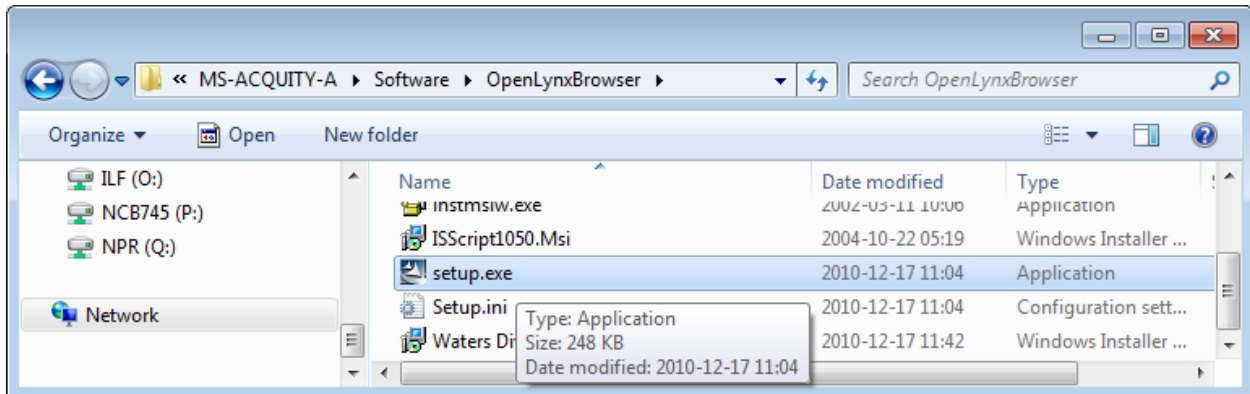
Find installation files

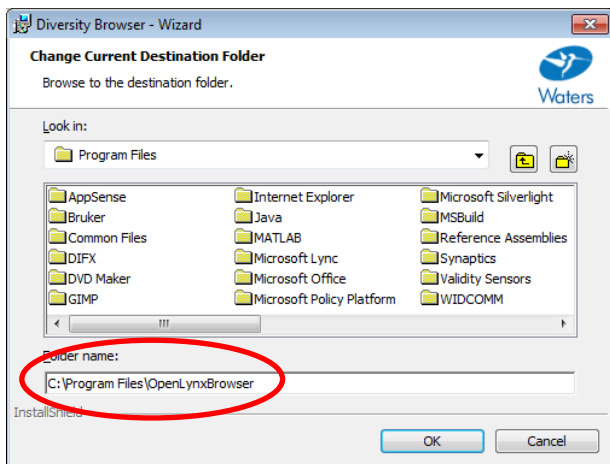
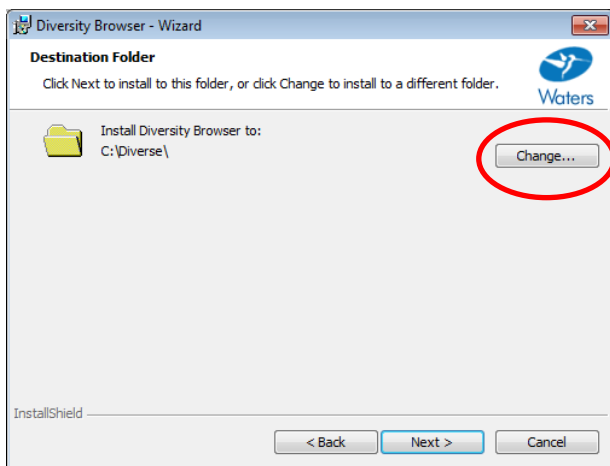
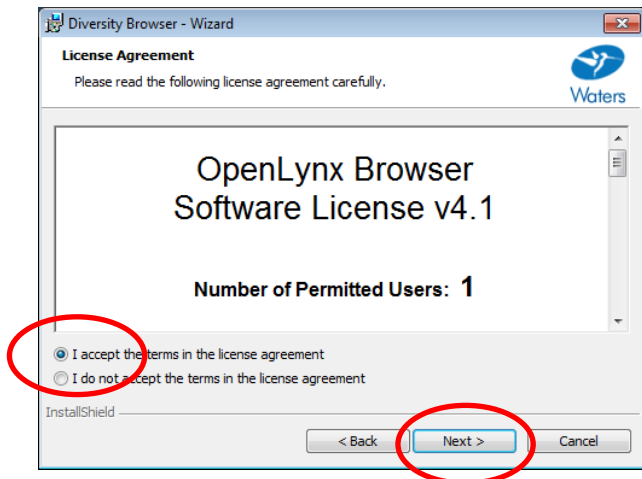
Press the Windows-key (⊞) and enter: <\\sundcifs12\ILF\FTP\MS\MS-ACQUITY-A\Software> or find the corresponding folder on the O-drive (O:\ILF\FTP\MS\MS-ACQUITY-A\Software).

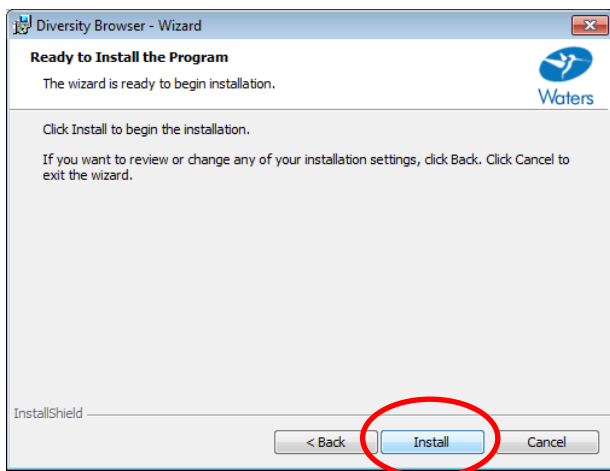
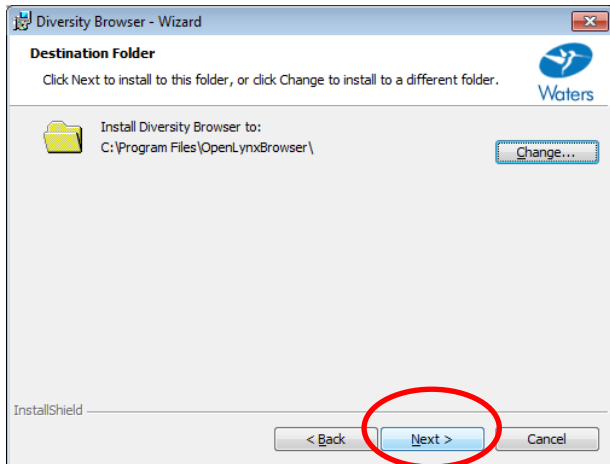


Start installation

Enter the OpenLynxBrowser-folder and start the program “setup.exe”.

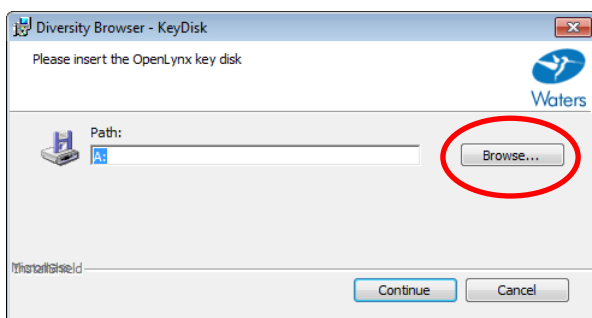




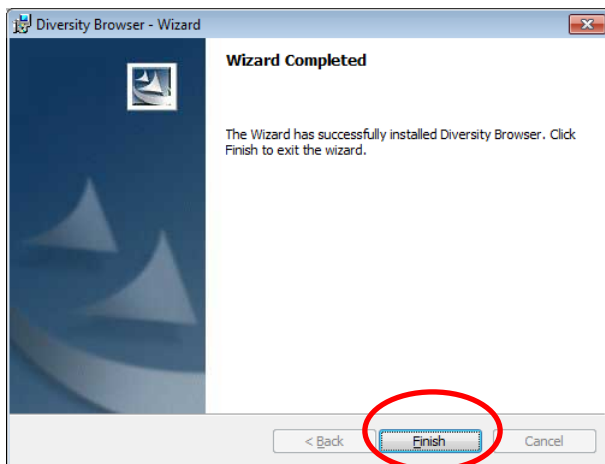
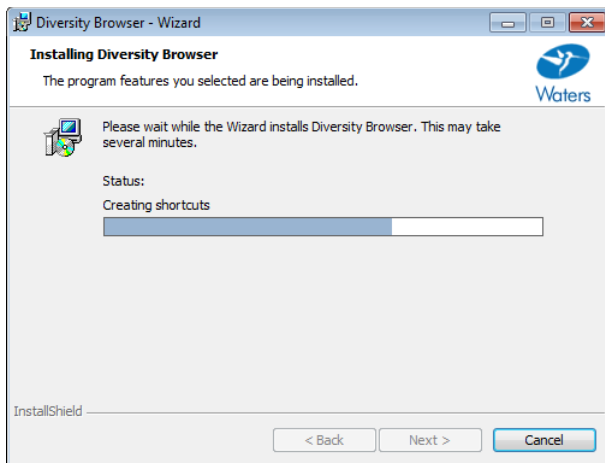
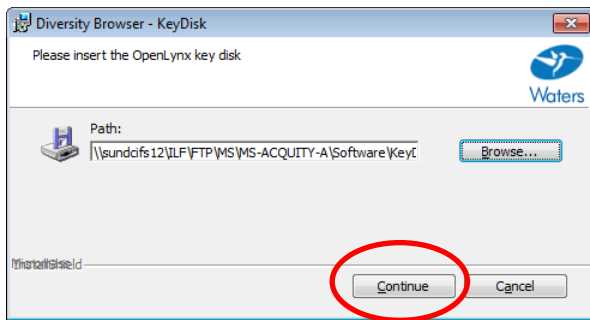


Enter license information

We have a total of 10 licenses, and it is unlikely that all will be used at the same time.

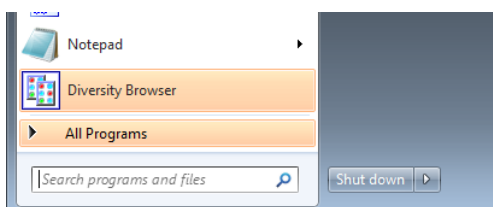


Press 'Browse...' and enter: [\\sundcifs12\ILF\FTP\MS\MS-ACQUITY-A\Software\KeyDisk](ftp://sundcifs12\ILF\FTP\MS\MS-ACQUITY-A\Software\KeyDisk) or browse to O:\FTP\MS\MS-ACQUITY-A\Software\KeyDisk.



Start the program

The name of the program is "Diversity Browser".



Open RPT-files

The RPT-files are sent by mail (if e-mail is entered when samples are submitted) and they are also uploaded to the O-drive. Open <\\sundcifs12\ILF\FTP\MS\MS-ACQUITY-A\Reports> and find the RPT-files. Copy the files you want to save to your own storage. The files on the O-drive are automatically deleted after 14 days.

