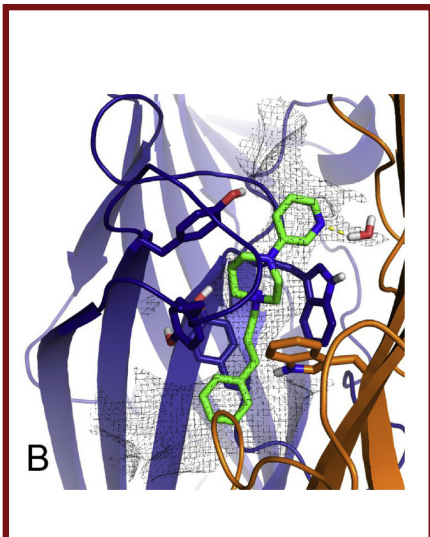


Medicinal Chemistry Research Section  
Dept. Drug Design and Pharmacology

**Neuromedicinal chemistry**  
**Frølund lab**



**Supervisor**

Bente Frølund

Professor

e-mail: bfr@sund.ku.dk

phone: 3533 6495

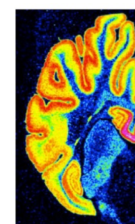
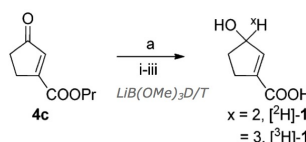
Room 205, Building 30



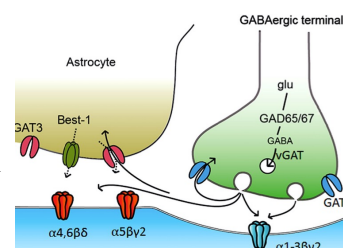
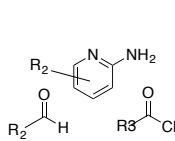
We are focusing on GHB/CaMKII medicinal chemistry and the ionotropic  $GABA_A$  receptors and transporters. All constituting relevant targets for *CNS diseases*. We develop molecular probes aiming for receptor subtype selectivity and pharmacological tools/biomarkers, for studying dynamics, modulation and rewiring signaling.

**Potential master thesis projects**

- **Development of molecular probes (fluorescent, photoaffinity, radioligands) for visualization of biological targets**



- **Design and synthesis of ligands selective for the extrasynaptic  $GABA_A$  receptors**



All done in an international and inspiring research environment.

Also openings for a MSc abroad: e.g. Italy (Turin, Milan), Belgium (Liege), France (Paris)

**Potential techniques master students can learn**

- Different techniques within exp. organic chemistry
- NMR, LC-MS, HPLC for characterisation

Highly interdisciplinary projects bridging medicinal chemistry with molecular pharmacology and biostructural chemistry

