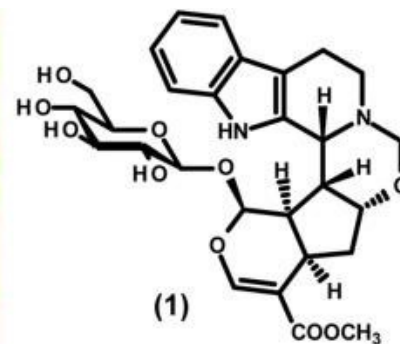


NATURAL PRODUCTS AS LEADS IN CNS DRUG DISCOVERY

MSc project in Medicinal Chemistry

ECTS: 45-60 points

START: As agreed to



Natural products comprise a rich source of chemically diverse molecules with diverse biological activity. In fact, some of the most important drugs today are natural products or close synthetic analogs thereof.

The objective of this project is to synthesize natural product **1** (or analogs thereof), and hence investigate its biological action in collaboration with pharmacologists. The MSc study will comprise:

- Literature search
- Retrosynthetic analysis
- Experimental work (synthesis)
- Design of analogs (computational chemistry)
- Thesis writing & oral defense

If you would like to hear more about this project, or other medicinal chemistry projects we have ongoing, you are welcome to contact me.

CONTACT:

Lennart Bunch, Department of Drug Design and Pharmacology (ILF)

E-mail: lebu@sund.ku.dk

STUDENT SUPERVISION:

I hold bi-weekly project meetings with each student in the group. In addition to this, I run an open door policy after 13:00, where you are always welcome to drop by. As a master student you will also have a PhD student or postdoc as your co-supervisor.

ABOUT THE BUNCH RESEARCH GROUP AT ILF:

In the BUNCH research group we focus on design and synthesis of small molecules (tool compounds), which can help to understand complex psychiatric diseases such as schizophrenia and depression. We work closely with pharmacologist at the department - and internationally - to achieve this goal.

Please see the group webpage here for more information and previous work: [Bunch group](#)